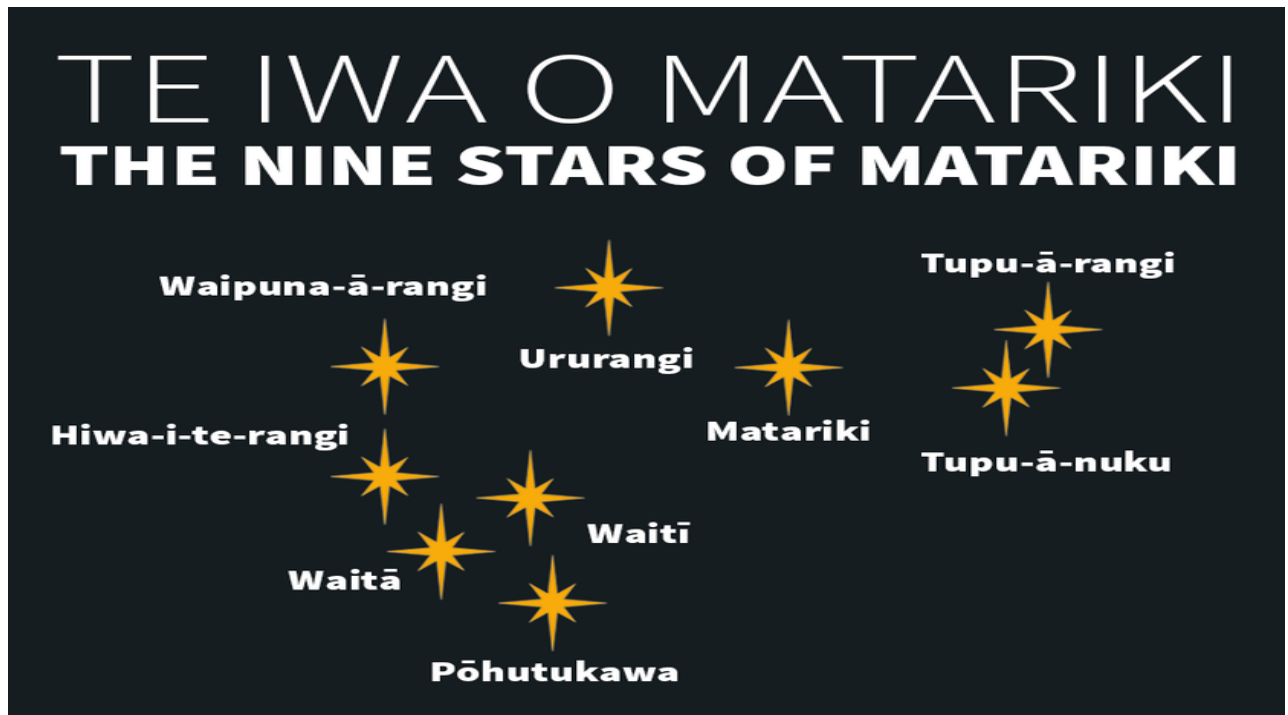


DISPATCH



MESSAGE FROM KEVIN (COG GENERAL MANAGER)

June has been a tough month for everyone with a sustained period of poor weather and a number of incidents. Thank you to all of you that have gone the extra mile to look after our customers during these challenging times, whether it be preventing properties from being flooded, ensuring that everyone has water, or preventing wastewater from entering our streams and harbour.

June also marks the end of the financial year. It is pleasing that we have come close to being within our budgets despite the pressures of unpredictable breaks and incidents. So, thank you to everyone for their effort here.

We are in the midst of finalising our business plan for the year that lies ahead and look forward to sharing this with you in due course.

And finally, we are rounding out the financial year with breakfast BBQ's at each of the toolboxes to recognise your great work – enjoy.

Keep safe,

Ngā mihi

Kevin

OUR TEAMS DOING THE MAHI ACROSS THE REGION

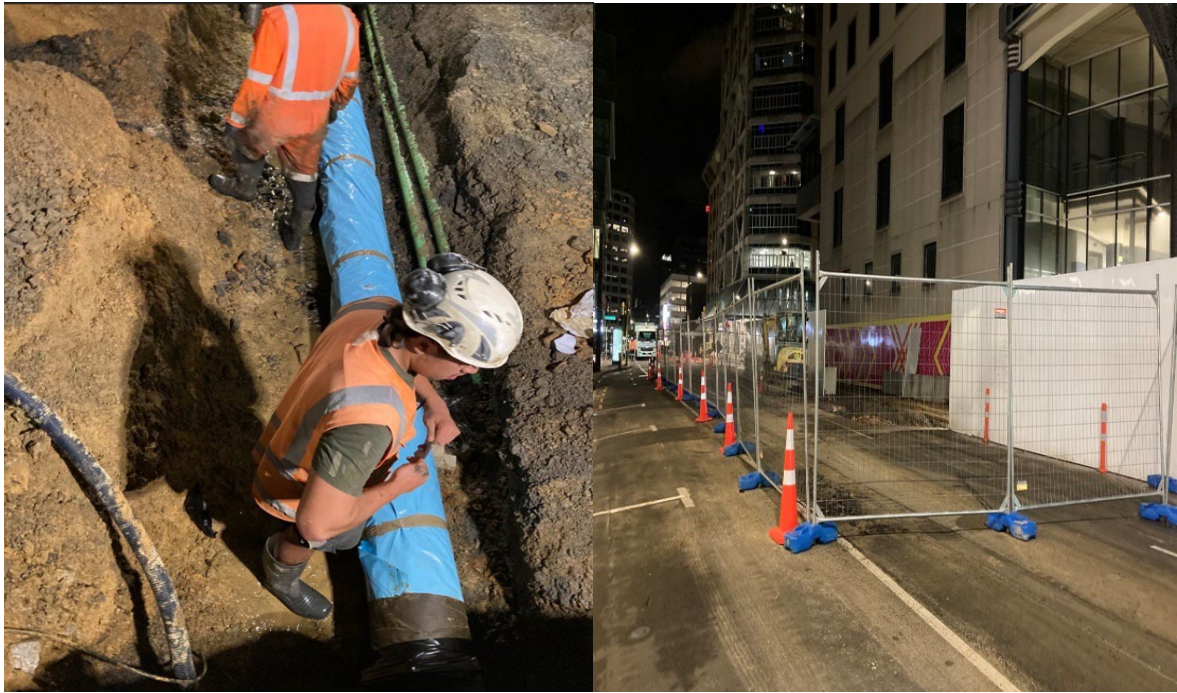
VICTORIA STREET

Early Sunday morning of Matariki weekend, teams responded to a possible collapse of the 300mm Wastewater Rising Main outside the Library in Victoria Street Wellington. Swinging straight into action, the flow was diverted via pumping and re-direction of valves, reconfigured to ensure levels of service were maintained without any overflow into the harbour. Traffic management was set up and the site secured with the Incident Response Team engaged to manage things.

The initial discharge from the rupture was cleaned with further monitoring along all outlets along the harbour area. Great progress was made with the team being able to expose and remove the damaged section of pipe earlier than expected, resulting in the pipe being replaced and the network returned to normal operation.

Wellington Water has received positive feedback from numerous impacted customers and stakeholders regarding the high level of communication and engagement throughout the incident. The management here at the Petone office were also full of praise at how well managed the whole event was “it worked like clockwork”. Having the right people on the ground, doing what needed to be done in a safe manner and keeping communication open – great result teams you have done yourself proud!







WILD WELLINGTON WEATHER – BUSY TIMES

June wet weather events saw four properties have floodwater enter habitable areas. The Customer Resolutions team continue to work hard responding to incident reports whilst the teams on the ground continued their great work.

WEBB & TARANAKI STREETS



Digging out the manhole at the intersection of Webb & Taranaki to replace the faulty valve





Simon Angus and the Pipelines team showing us how it's done!

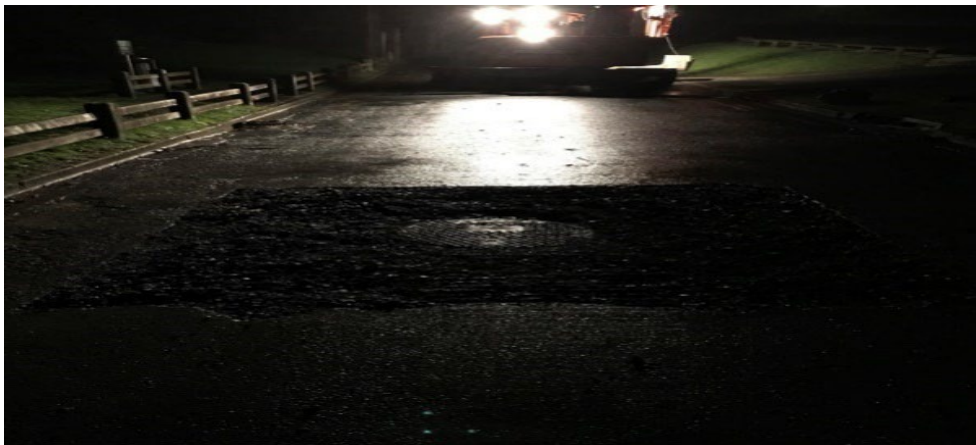


BOARBUSH ACCESS ROAD SLIP – SAFETY ALERT



COLLAPSED WASTEWATER MAIN HELSTON ROAD

Work has been completed in repairing the collapsed wastewater main located outside number 66 Helston Road. A huge thank you to all the individual staff and our external contractors SAP, Dawsons & Tatana Contracting who worked on this site during the long weekend and through very challenging conditions above and below ground.



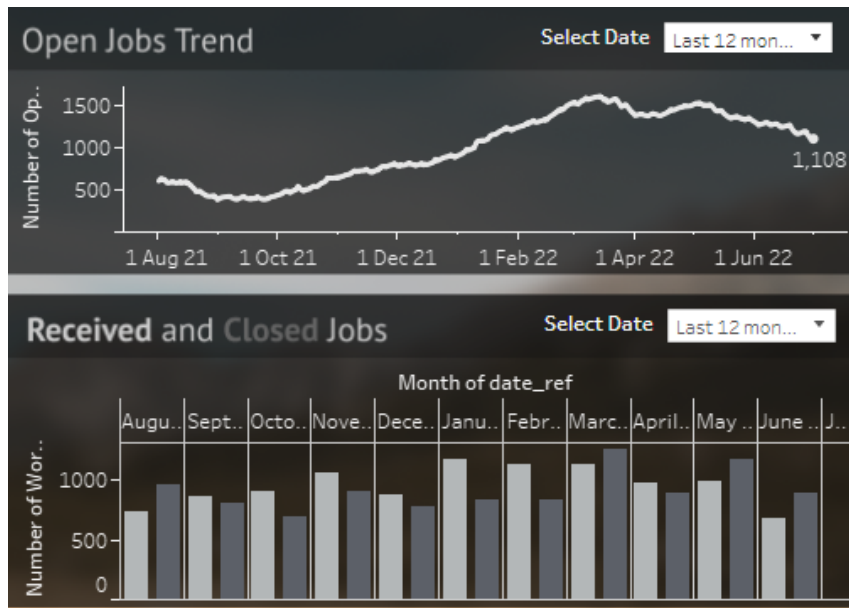
LOWER HUTT: THINKING OUTSIDE THE SQUARE - INGENUITY AT ITS BEST!!

A large tree growing next to the 750mm wastewater pipeline from Ava pump station was removed by the landowner (GRWC). The risk with removing large trees is the potential upthrust from the remaining root system. This appears to have happened and caused a displacement of the rubber ring collar, creating sufficient moment at the joint to open the rubber ring seal and cause leakage around the ring and collar.

The crew managed to improvise with a temporary repair that successfully stemmed the flow.



TRACKING PRODUCTIVITY



Great work, backlogs status this morning (reflective of 30 Jun status) = 1,108 😊

898 CSR jobs closed during month

684 CSR jobs report during the month

Delta closed 214 😊 – thanks!

If can we drop a further few hundred during July (whether it be work done; duplicates cleansing etc) we will break through the 1,000-job barrier which will be a good morale boost.

Target to get into a really good space - we should be targeting around 400 backlogs before Spring starts in September.

This means ideally closing out a surplus of 350 / month over the July and August or put differently closing **out close to 1,000 jobs per month** (all depots).

That is a tough target given resource and pending budget constraints, but I trust you will focus to keep teams motivated to safely deliver and do the best we can.

This was done in March and we can do it again!

BURST WATER MAIN - 78 RONGOTAI ROAD

Site manager Sean de Roo and incident controller Des Scrimgeour at the site of the Kilbirnie main repair. The Wellington Water-branded incident response truck that we recently commissioned is in the background, while the red container is a self-contained pump helping to prevent further damage to the excavated area.





Luke Taylor

The National Examination Board in Occupational Safety and Health (NEBOSH) is a leading global organisation providing internationally recognised qualifications.

On 30th June, Luke received a pass for both elements of his NEBOSH general certificate in International Health and Safety. *"NEBOSH can be a very challenging and was a jam packed few weeks but it was a great feeling to receive the notification that I had passed"*

Well done Luke - great effort!

RECRUITMENT NEWS

Recruitment for the second Infrastructure Skills Centre to be held later in the year kicked off with the Wellington Water team attending the Hutt Valley Chamber of Commerce, Career Pathway events in Lower and Upper Hutt this week. The events, held over two days attracted over 1200 college students, career advisors from the Hutt Valley colleges and youth employment brokers in the region. With so much on display, many students would have struggled to absorb what was available to them and our strategy is to follow up with the college career advisors who will pick suitable students for us to pitch the Infrastructure Skills Centre to directly at the start of term 3.

Victoria, who is a new graduate of our first Infrastructure Skills Centre course, and a graduate from Naenae College was a star attraction. Showcasing not only young women on our frontline but emphasising that there are opportunities for people to go directly from college into work and be trained while earning a wage.



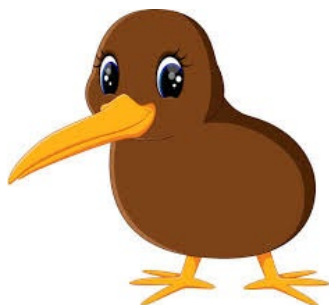
COMPLETION OF ELSDON PARK WETLAND

The first of its kind for Wellington Water, in partnership with Porirua City Council and Ngāti Toa, and with funding support from Ministry for the Environment, this native wetland has been purposefully designed to capture and naturally filter excess stormwater before it reaches Te Awarua-o-Porirua Harbour.



This is problem solving at its finest; not only will the wetland help alleviate flooding and protect the harbour, but it also provides a new, beautiful native habitat within Porirua city.

The project is a great example of innovation and collaboration between our Wellington Water consultancy and contractor whānau. The unique approach of managing large volumes of stormwater is one that we hope could be viable in other areas.



Tēnā koa tiaki ia koe

THANK YOU
FOR BEING AN
INTEGRAL PART
OF OUR TEAM