



HiPo Hazard - Working Under Power Lines

What happened?

Wastewater wells were being scraped clean as part of routine maintenance when the operator realised that their scraper had the potential to make contact with the overhead power lines when removing/ lowering the scraper.

Summary

There is a significant risk of making contact with the overhead power lines due to the length of the scraper, the depth of the wells and the proximity of the power lines above.

Also identified was the potential for water spray to cause electrocution through arcing, and a concern around lone working and notification of incident.

Immediate Actions

Immediately ceased all scraping of these wells until further notice / remedial action.

Raised Hi-Po hazard - notified all areas of stop-work.

Team review of process and control methodology.

Lessons Learned / Ways to Control Risk

- Regularly review processes
- Continue to voice concerns around process and safety.

Action Required

Update procedure for this line of work where power lines are present.

Additional signage required for visible identification of overhead powerlines

Demarcation of danger areas/ "no-go" zones for each site

More Information and Training

Training for all staff in new process.

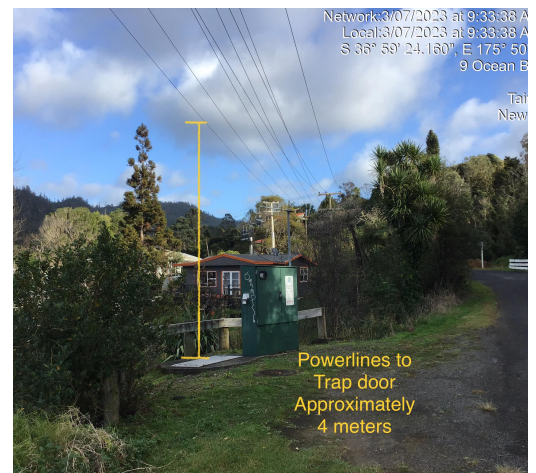
**Tairua, Coromandel | 9.52am |
3 July 2023**

- ✓ Water
- ✓ Environmental Services
- ✓ Industrial & Energy
- ✓ Resource Recovery

Contact SHEQ

+6427 223 9533

laura.fourie@veolia.com



Commitment to the Veolia Always Safe Charter is essential throughout all levels of the organisation.

FOR INTERNAL DISTRIBUTION ONLY

always  safe