

# Moa Point WWTP Community Liaison Group Meeting

16 April 2025



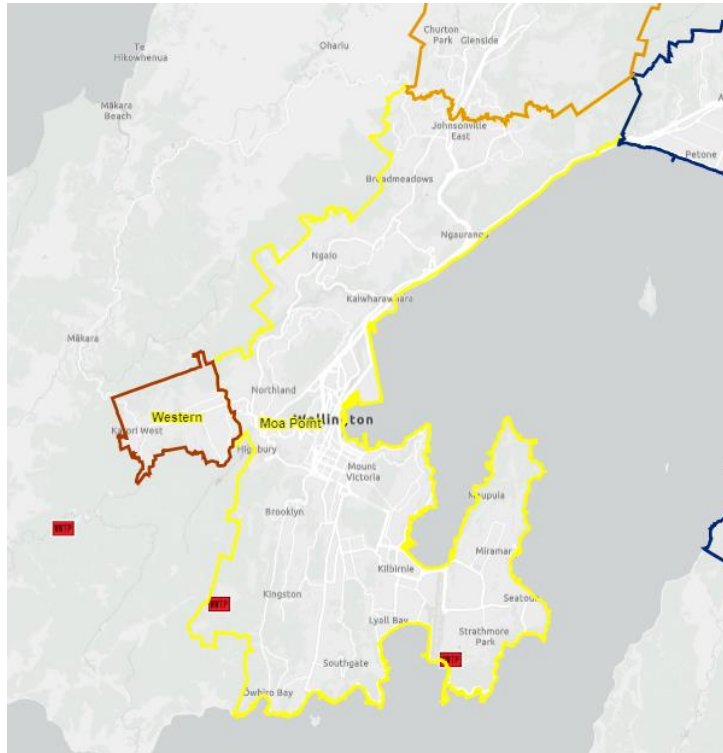
Our water, our future.

# Meeting Agenda



Items	Who
Meeting Introductions and H&S Announcement	Blair Johnson Head of Wastewater Contract
Wellington Water WWTP Compliance and Performance Update	Blair Johnson Head of Wastewater Contract
Commentary from GWRC	Resource Advisor, GWRC
Capital Projects Update	Amy Smith Senior Engineer
Odour Complaints Procedure	Blair Johnson Head of Wastewater Contract
Questions and Feedback on Moa Point Performance	All
Closing Remarks	Jeremy McKibbin General Manager Treatment and Control Systems

# Moa Point WWTP Background



Our water, our future.

# Plant Performance July 2023 – June 2024



- Average daily flow was 57,611 m<sup>3</sup> /day - Compliant
- Non-compliance with treated wastewater discharge quality [stated in Condition 10]
- There was five discharge events for this reporting period and were all unconsented discharges
- Two odour complaints received during this reporting period for Moa Point.

# Plant Performance July 2024 – March 2025



- As of March 2025 data: Treated Wastewater BOD and total suspended solids are compliant while treated wastewater faecal coliform remains non-compliant.
- Average daily flow was 65,726 m<sup>3</sup> /day
- There were three consented discharges and five unconsented discharges due to plant's reduced treatment capacity which all occurred on a wet weather conditions. 5 were less than 15 minutes duration.
- Two odour complaints received for this reporting period for Moa Point

# GWRC Comment of Compliance

# Consent Compliance Rating FY23/24



Greater Wellington issued the following compliance rating for the plants' resource consents :

- WGN080003[26182]: Land Occupation by Outfall Pipe and WGN080003 [26183]: Contaminants Discharge to Air (WWTP)  
- Low Risk Non-compliance Rating
- WGN960094 [1471]: Contaminants Discharge to Air (IPS) and WGN080003 [35047]: Discharge of Partially Treated WW to CMA  
- Moderate Non-compliance Rating
- WGN080003 [31505]: Discharge of Treated WW to CMA and  
Significant Non-compliance Rating

The overall compliance summary rating for the site in FY2023/24 was “Poor”.

# Project Updates

# Project Update: Inlet Pump Station Renewal



Project objective

Replace the 10 corroded discharge pipes and pumps

Current status

Riser repairs were completed as of 26 March 2025.



Leaking Pump Discharge Manifold



Photos of new discharge pipes left photo shows the old pipe and the photos on the right are the newly installed ones

# Project Update: Inlet Pump Station Renewal



Inlet pump being lifted out. Work going on within the SMF construction site has been challenging.

# Project Update: Clarifier Mechanical Bearing Replacements



# Project Update: Clarifier Mechanical Bearing Replacements



Project objective      Replace the mechanical bearing in Moa Point WWTP's three Clarifiers.

Current status         The 3rd clarifier is currently offline, and work is in progress to refurbish.



*(Inside of Clarifier 2 post initial clean)*

# Project Update: Clarifier Mechanical Bearing Replacements



Our water, our future.

# Project Update: UV System Renewal

Project objective: Replace the plant's UV system due to age and obsolescence

Current status: The tender has been awarded to Filtec and site works will commence in October 2025



# Project Update: SCADA, PLC and MCC Renewal



Project objective

Replace the SCADA, PLC and MCC of Moa Point and Western WWTP due to failure and obsolescence

Current status

The project is close to contract award, with physical works starting in 2026



Photo of the site's Motor Control Center (MCC) units

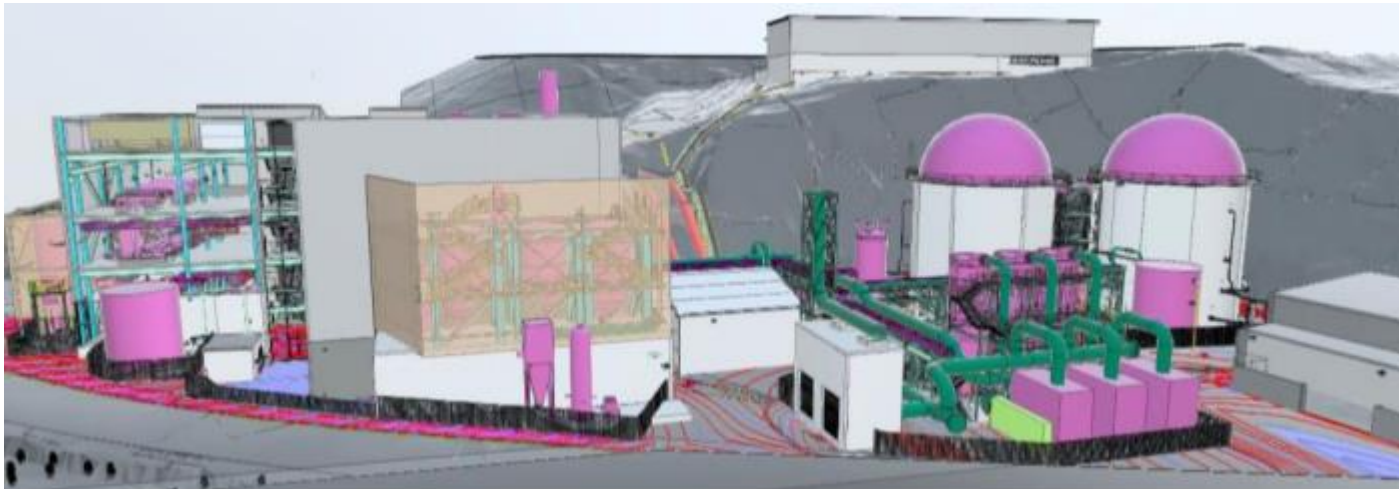
# Project Update: Various



- Aeration System Renewal – progressing through design phase.
- Odour & Ventilation Renewal – short term investigations into issues and resolutions are ongoing. The longer-term renewal project is on hold until funding is available after 2027/28
- Roof Replacement – on hold until funding available in 2027/28

# Project Update: WCC Sludge Minimisation Facility

- A Wellington City Council project
- Operational planning underway



# Complaints Procedure

# Moa Point Complaints Procedure



Complaints to the Moa Point Wastewater Treatment plant can be sent to the following contact details:

**Veolia Duty Manager (First Point of Contact): Call 0800 928 371.**

Veolia's duty manager contact number operates 24/7 as such complaints can be directly forwarded to them especially if the complaint is urgent and/or happened after office hours.

Wellington Water: Call 04 912 4470 or email [customer@wellingtonwater.co.nz](mailto:customer@wellingtonwater.co.nz).

For Environmental and Pollution 24-hour hotline, call Greater Wellington Regional Council Hotline at 0800 496 734.

Complaints shall be actioned within 24 hours upon receipt and the records being written to the plant's operational incident log.

Odour and/or wastewater discharge complaints will be forwarded to the regional council.

# Questions from the Community

# Questions Received (abridged)



Is there a recommended method for making a complaint e.g. phone call, email etc?

Who is responsible for managing and tracking complaints?

How is an odour complaint "actioned" i.e. who is supposed to respond and what do they do?

If an odour issue is confirmed, what happens next?

What methods does the plant operator utilise - if any - to ensure that no discernible odour resulting from the operations of the wastewater treatment plant at or beyond the site boundary?

# Questions Received (abridged)



Complaints – Who do we complain to? Can we put the complaint email in the discharge email? Can you retrospectively complain for past discharges?

Where can we find the GWRC notices i.e, Please Explains, Infringements, Formal Warnings and Abatements? Can we publicize them to the community?

What caused the increase in BOD and TSS between Feb and June 24?

Ammoniacal Nitrogen – It is recorded but not in the consent – To GWRC, How long does it take to get a new compound added into the consent?

Health monitoring - How can WWL/GWRC be sure that these discharges result in “negligible” increased risk for those using the water when you have no long term health data?

Micro plastics – Are there any tests for micro plastics from the discharges (long and short outfall)? We notice an increase in plastics on the beach during southerly’s.

Monthly meeting with GWRC – Are the minutes publicly available? Why aren’t they part of the reporting regime?

Discoloration of the CMA – Are there cameras in place along the coast to record? With the short outfall discharges could a map be supplied to the public alerting them of the discharge point?

Inflow and Infiltration – Why are there reductions to investigations that started 7 years ago? What is WWL and WCC doing to increase the catchment investigations, seeing as I&I is the primary reason for unconsented discharges?

Notices with short outfall discharges – These should be sent within 2 hours of it happening not 12 like some cases.

I would like the Short outfall closed – when will it be closed? You don’t have consent for it?

# Update information and contact details



If you would like to receive regular updates on Moa Point WWTP, please email [customer.notifications@wellingtonwater.co.nz](mailto:customer.notifications@wellingtonwater.co.nz) and we will put you on the interested parties list.

We have a dedicated website page with regular updates for the site: <https://www.wellingtonwater.co.nz/resources/topic/wastewater/wastewater-treatment-plants/moa-point-wastewater-treatment-plant/>



Thank You



Our water, our future.  
Our water, our future.