

**Draft**

# **He Rautaki Wai Āwhātanga**

## **Stormwater Management Strategy (SMS)**

Emily Greenberg, co-Project Manager  
Angela Penfold, co-Project Manager



# Karakia timata (Opening)

Pou hihiri

Pou rarama

Pou o te whakaaro

Pou o te tangata

Pou o te aroha

Pou e here nei i a tātou

Mauri ora ki a tātou

Haumi ē, hui ē, tāiki ē!





# Agenda (25 slides)

1. Karakia timata (opening)
2. Integrated Water Quality Programme - Angela
3. The draft Stormwater Management Strategy - Emily
4. Next Steps
5. Questions and Discussion – Janice (facilitator)
6. Karakia whakamutunga (closing)



Outlet to Black  
Creek, Wainuiomata  
(photo:Diana Isaac)



Te Kukuwai o Toa,  
Porirua  
(photo:Stu Farrant)

# Online Draft Documents and Feedback Survey – due 28 Feb

[www.wellingtonwater.co.nz/projects/sms/](http://www.wellingtonwater.co.nz/projects/sms/) or Search on “managing stormwater”



[Help Desk](#)

[Network Status](#)

[Projects](#)

[Resources](#) ▾

[Contractors](#) ▾

[About Us](#) ▾



[Projects](#) / Managing stormwater to reduce pollution

## Managing stormwater to reduce pollution

[Overview](#)



[Current status](#)

[Background](#)

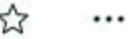
[Have Your Say](#)



# Coming soon!- Online ArcGIS StoryMap



He Rautaki Wai | Stormwater Management Strategy



[Introduction & Vision](#)

[Our Journey to Wai Ora](#)

[Catchment Descriptions](#)

[Future Stormwater Management](#)

[How You Can Help](#)

## Water Quality

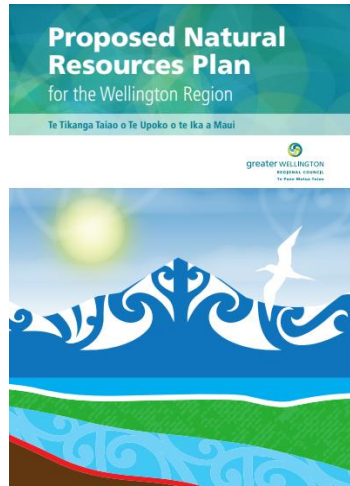
Over the last several years, Wellington Water has been monitoring water quality at stormwater outlets, freshwater sites and recreational coastal sites.

Please click on a monitoring site to see details about the water quality for that site.

For more information on water quality in your region, please visit the websites

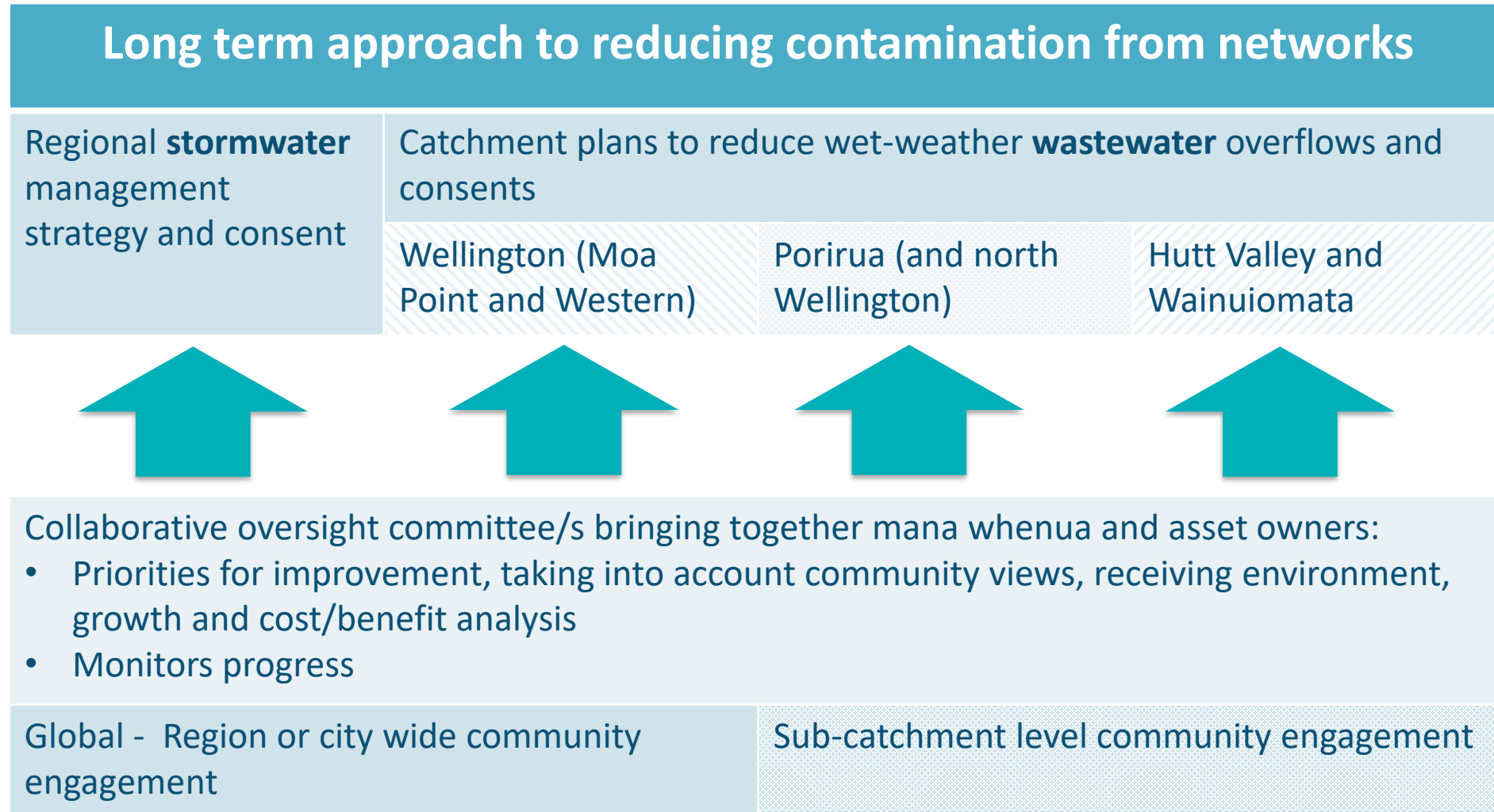


## Regulatory focus on water quality



- **Central Government:** Te Mana o te Wai is fundamental to management of freshwater
- **Regional Council:** Regional plan values and priorities identified by Whaitua processes
- **Wellington Water & Councils:** Need to reduce contamination in line with this framework
- **Three Waters Reform:** Te Mana o te Wai is included in legislative reforms

# Wellington Water: Integrated programme for water quality

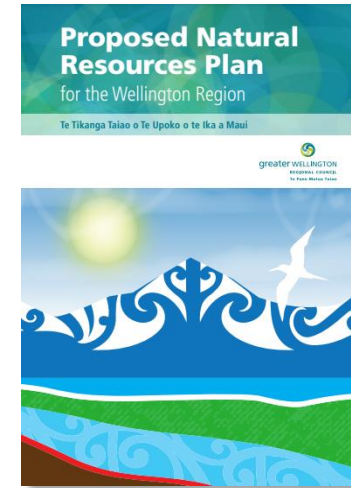




# Regional draft Stormwater Management Strategy and consent

Strategy will support the application for a Global Regional **Stormwater** Discharge Consent

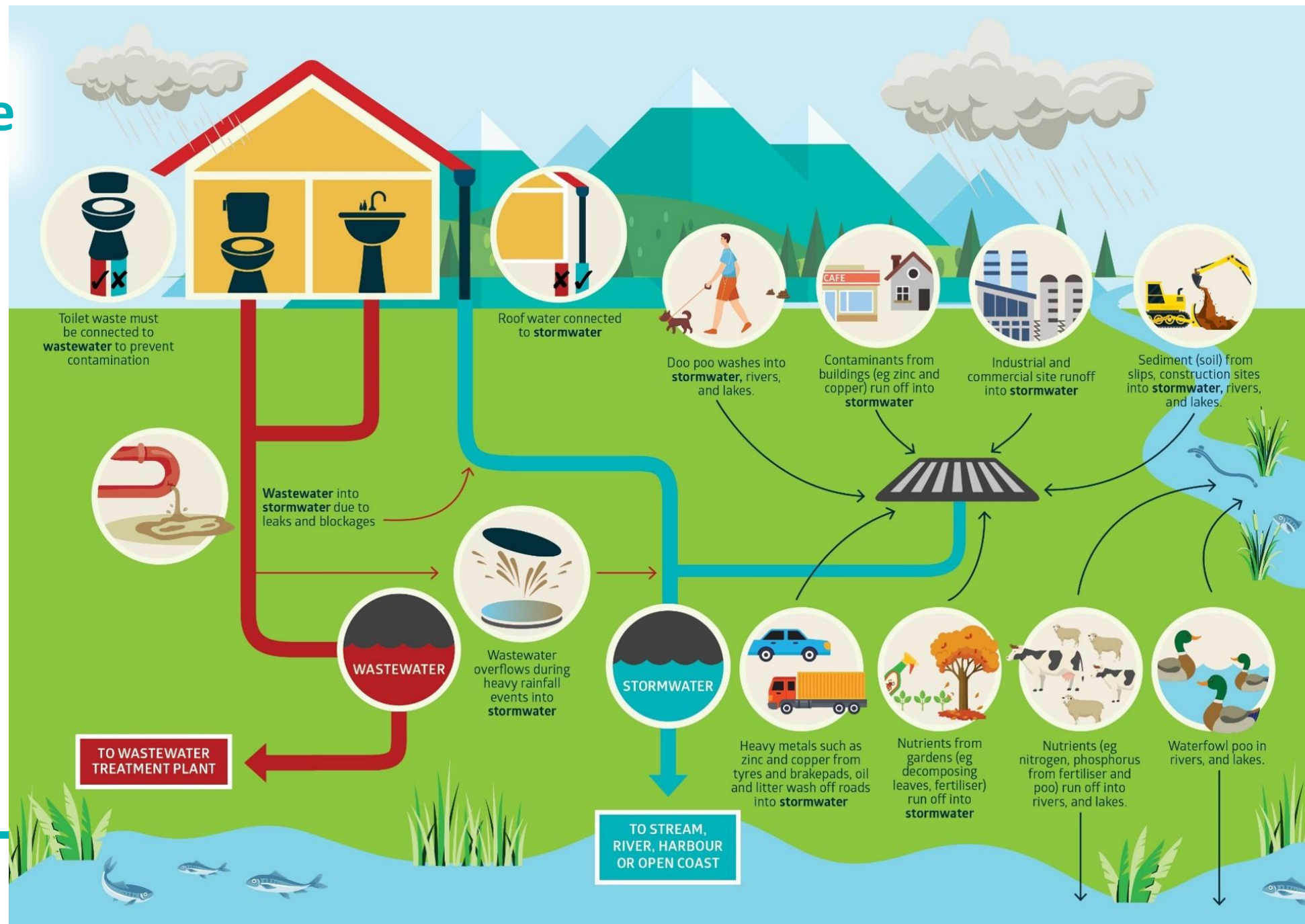
- Required under the Natural Resources Plan for the Wellington Region – Rule R53 Stormwater Discharge
- Requires a new way of managing stormwater – focus on stream and harbour health, rather than flood management
- Implementation will require working across councils and departments (especially planning, roading and parks)
- This is the start of our negotiation with GWRC about what we can control to improve water quality
- What do we need to understand or communicate?



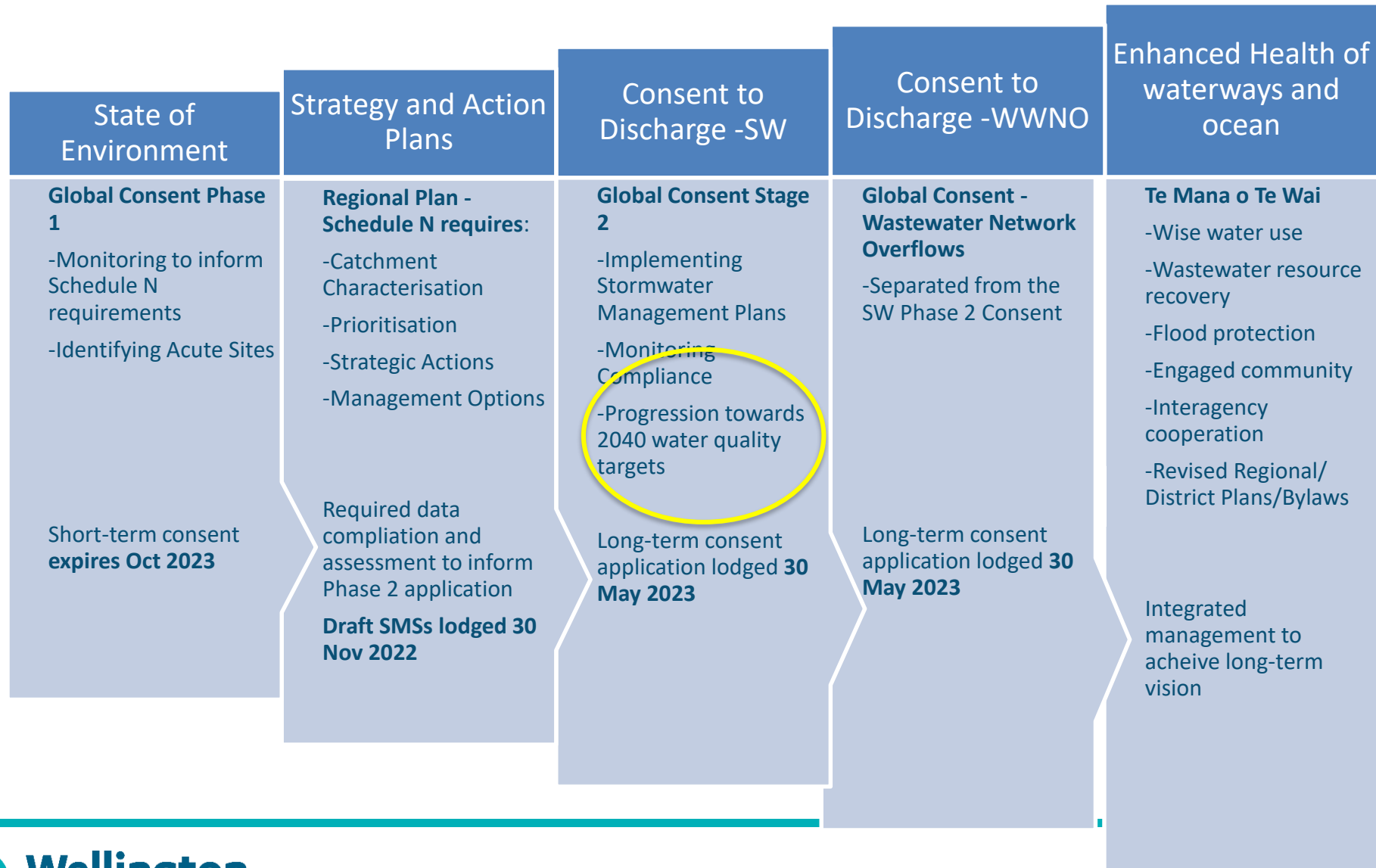


# Need to change how we manage Stormwater

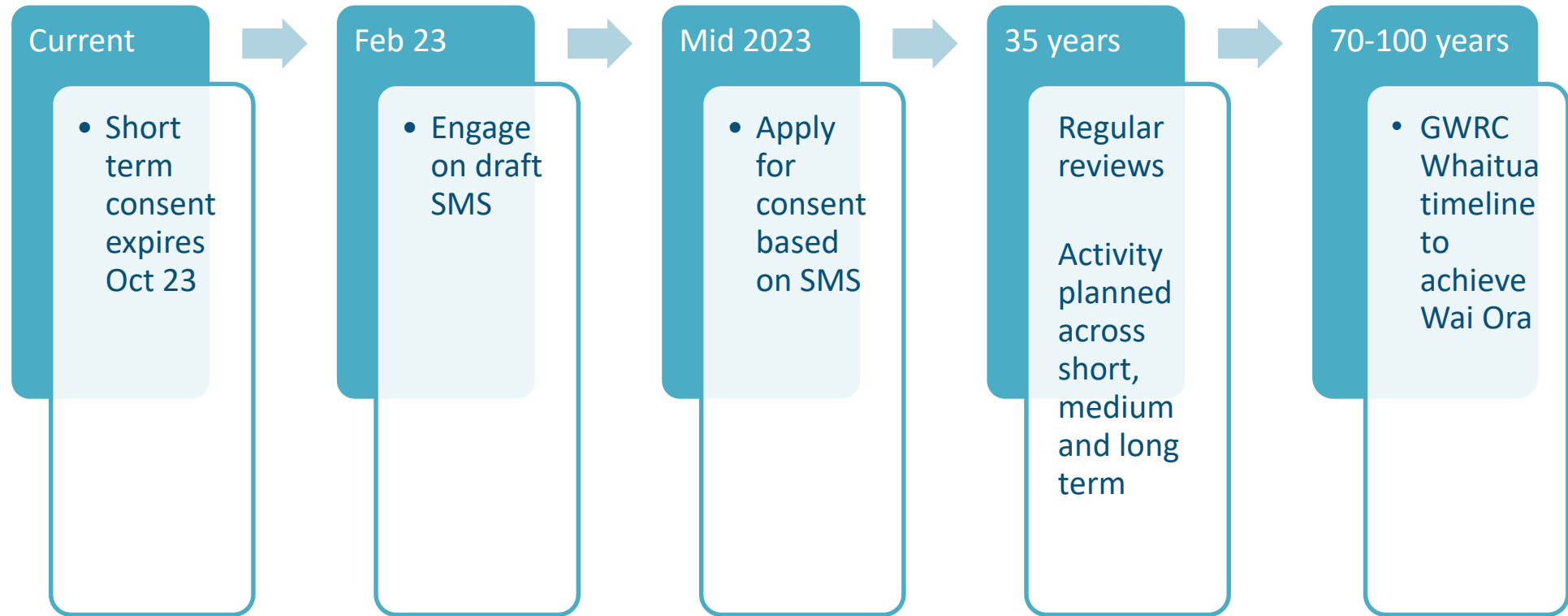
- ✓ cross connections managed as part of new stormwater consent
- X wet weather overflows will be managed under wastewater network overflow (WWNO) consent



# Stormwater Management Strategy focuses on pollution, not flooding



# Stormwater Management Strategy and Consent Timeline



Discussion: It is a long journey to Wai Ora (70 – 100 years) – is a 35-year strategy realistic?



# Vision for the SMS

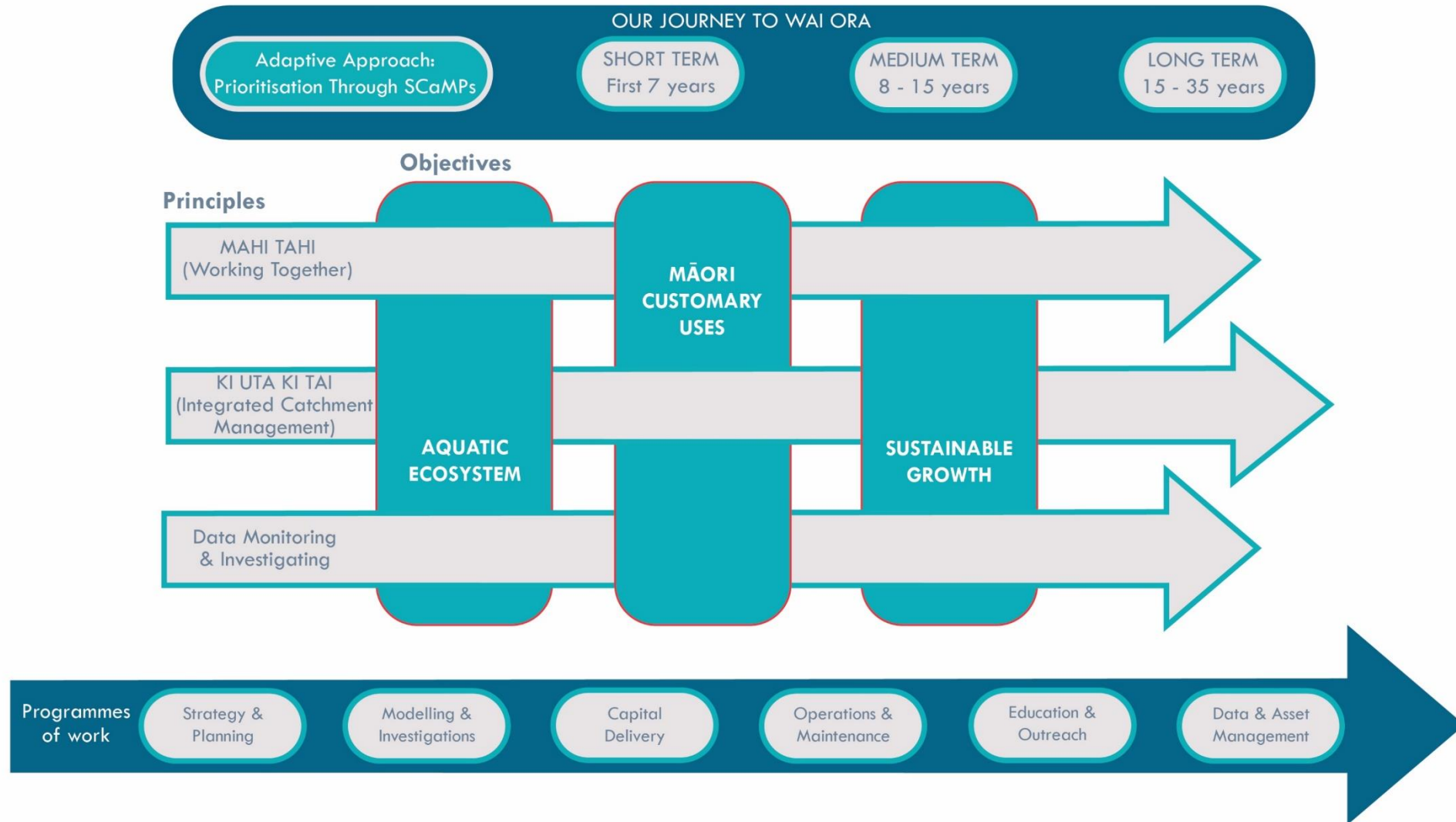
“

Our region treasures its water. Our streams and harbours are healthy, our drinking water is safe and secure, our networks are resilient, our growing cities are water sensitive, and we are prepared for a changing climate. Water is at the core of how we plan and grow our cities.

Discussion: Does this statement reflect what's important to you and your community?

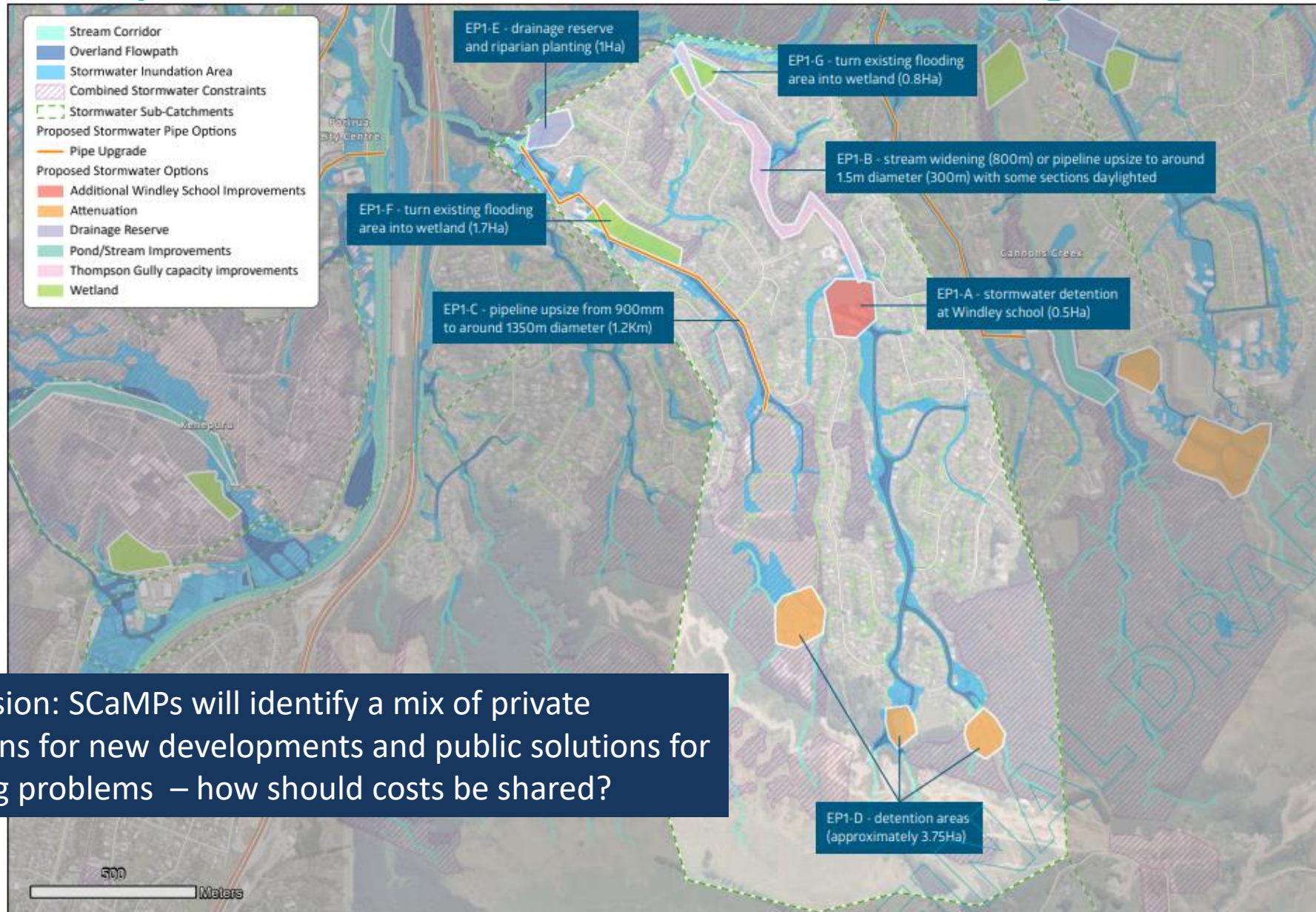
# Strategic Approach

Vision Statement: Our region treasures its water. Our streams and harbours are healthy, our drinking water is safe and secure, our networks are resilient, our growing cities are water sensitive, and we are prepared for a changing climate. Water is at the core of how we plan and grow our cities.





# SCaMP (Stormwater Sub-Catchment Management Plans)



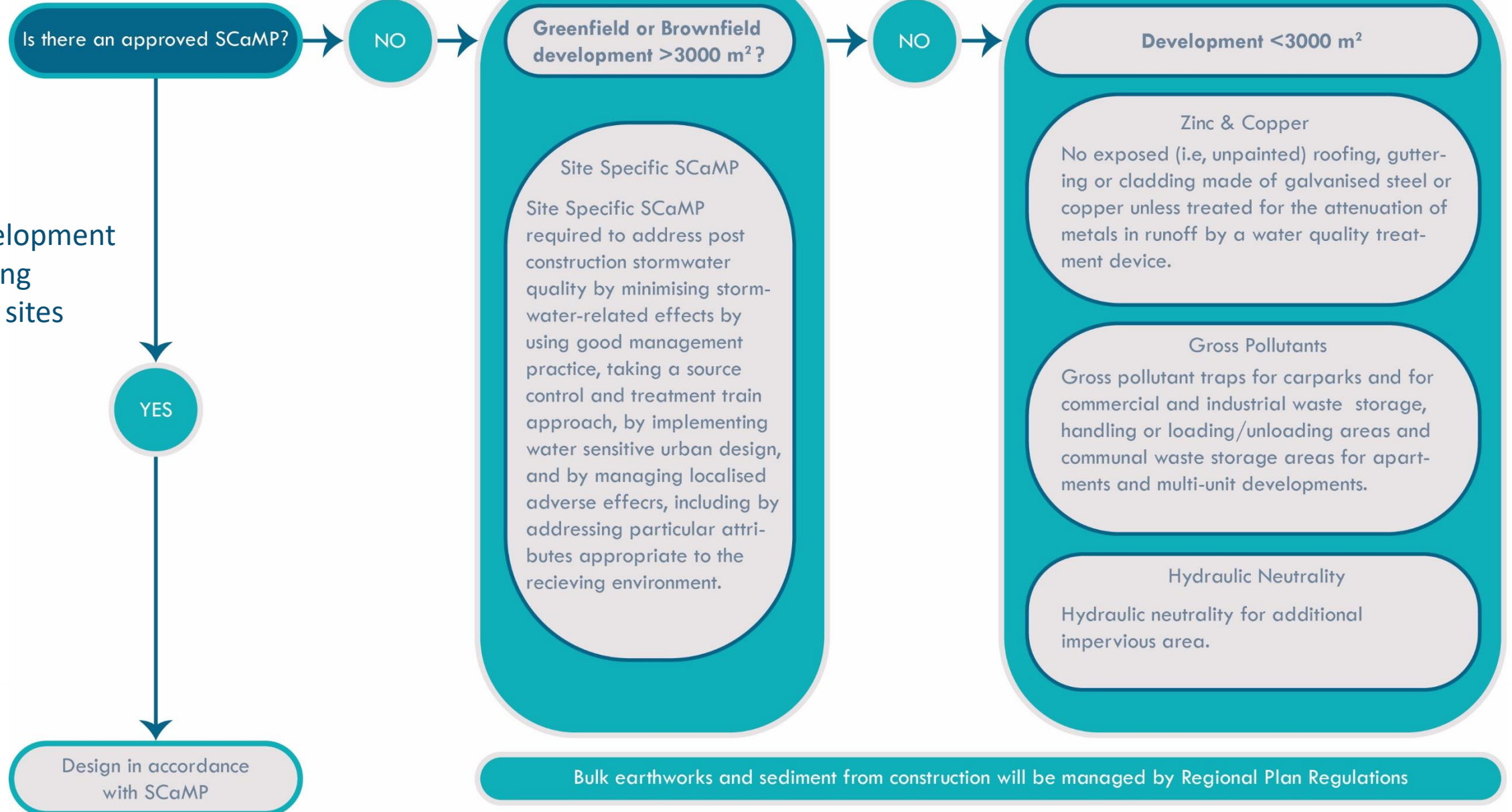
Discussion: SCaMPs will identify a mix of private solutions for new developments and public solutions for existing problems – how should costs be shared?



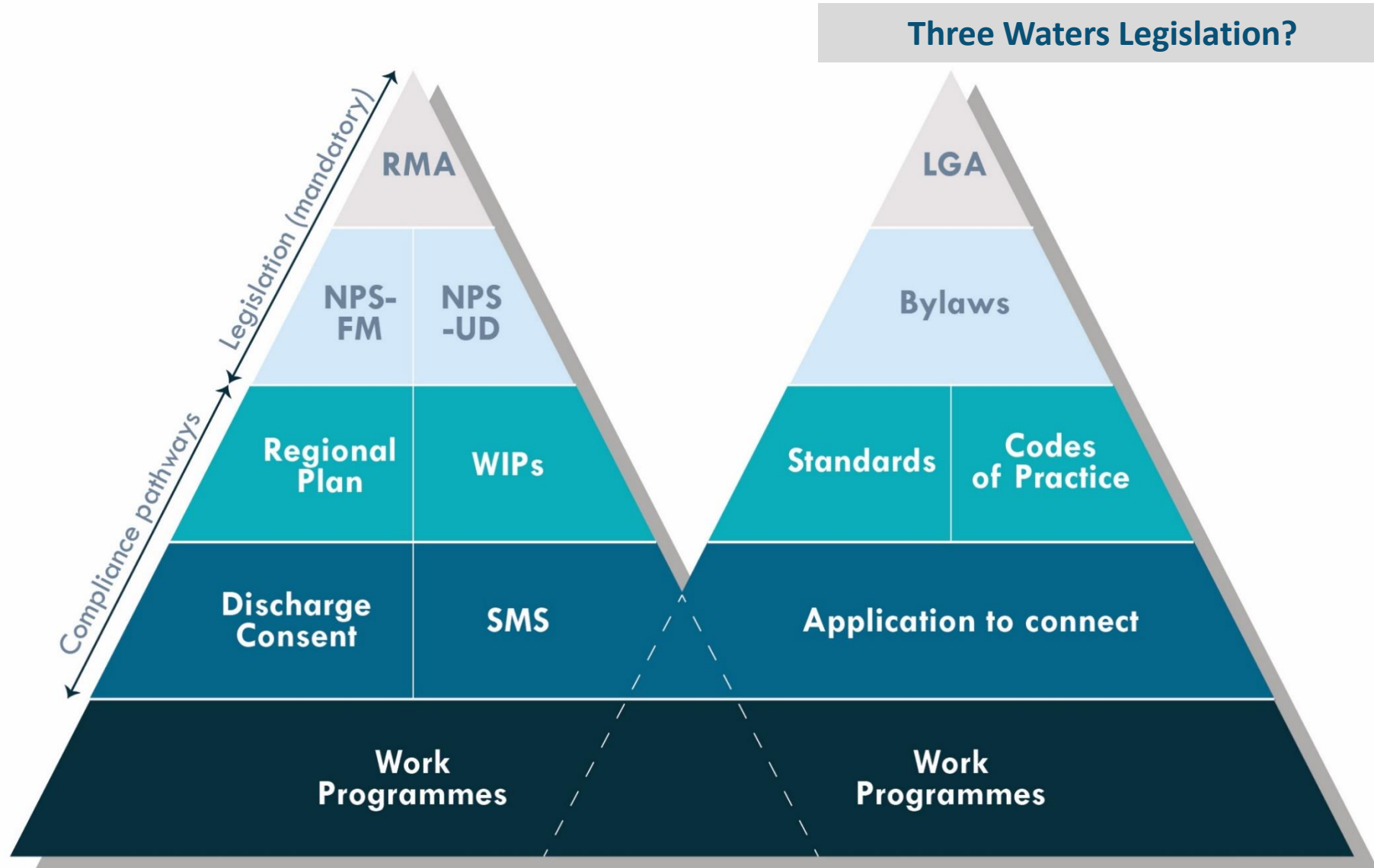


# Workstream 1: Universal Responses

New development  
and existing  
industrial sites



# Enforcement and Incentives



# Survey comments on universal responses



Discussion: Is there anything you think could be strengthened, or added to, universal responses?



# Workstream 2: Subcatchments

## Prioritisation for SCaMPs

- The initial prioritisation in the draft strategy will change.
- Already aware that have not factored in streams identified in Te Mahere Wai Te Kāhui Taiao as having a spiritual nature.
- Additional monitoring results, community engagement and development opportunities will refine priorities for where efforts and money are focused.

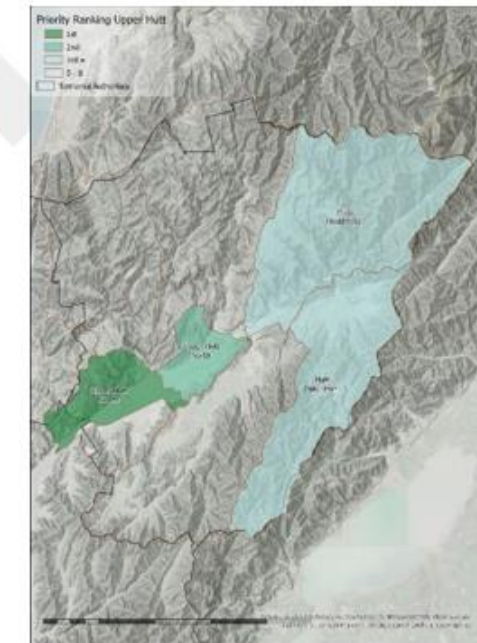
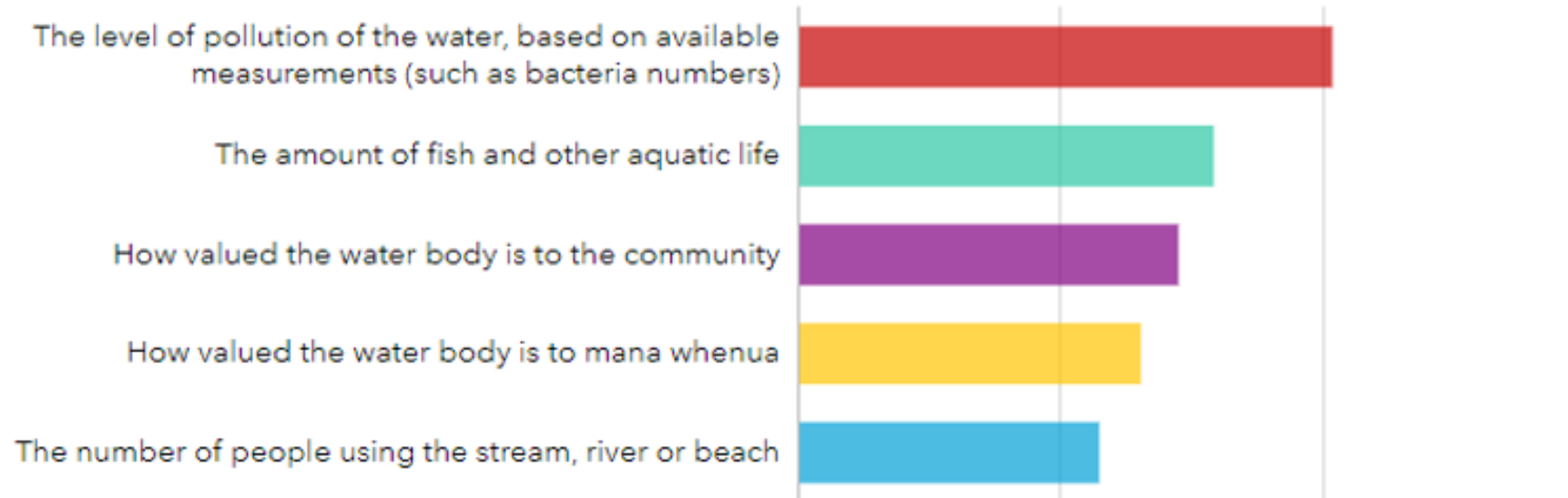


Figure 8.3 – Initial prioritisation of sub-catchments for the development of SCaMPs

# Prioritisation: proposed factors

This is what people responding to the survey tell us is most important to consider



Discussion: Are these the right factors? Are they the same in all four cities?  
What community engagement at a global (four-city-wide) level would provide confidence in the process?

# Workstream 2: Expanded and New Work Programmes



Discussion: What's the best way to engage with community groups, such as stream groups, when planning and delivering work programmes?

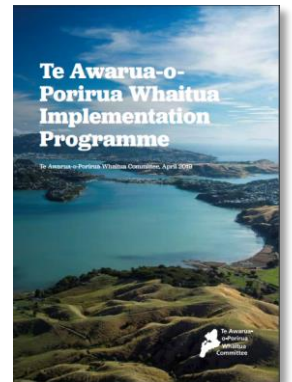
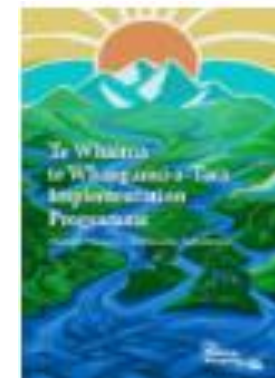


# Workstream 2: Expanded and New Work Programmes

## Whaitua Implementation Plan recommendations

- Collaborative governance group for consent compliance
- Universal Responses
- Sub-catchment Stormwater Management Plans (SCaMPs)
- Leading by example
- Pilot/Demonstration projects
- Integration with roading and parks
- Planning guide for Water Sensitive Design
- Contaminant Load Model development
- Industry education
- Integration with Wastewater Network Overflow Programme (separate implementation \$)

Discussion: What can we do now, prior to grant of consent in 2 years time?



# Next steps – Stormwater Management Strategy

## Feedback by 28 February 2023

- Complete the [online survey](#)
- Encourage others to complete the survey
- Email us at [stormwater@wellingtonwater.co.nz](mailto:stormwater@wellingtonwater.co.nz)

## March/April 2023

- Wellington Water considers feedback and revises strategy

## May/June 2023

- Consent application lodged with Greater Wellington Regional Council

# Questions and discussion

- It is a long journey to Wai Ora (70 – 100 years) – is 35 years a realistic timeline for strategy and investment planning?
- Does the vision statement reflect what's important to you and your community?
- SCAMPs will have a mix of private solutions for new developments and public solutions for existing problems – how should costs be shared?
- Universal Responses - is there anything that could be strengthened, or added to?
- How do we prioritise sub-catchments? Do we have the right factors? Are they the same across all four cities?
- How best do we engage with community groups such as stream groups when planning and delivering work programmes?
- What can we do now, prior to grant of consent in 2 years time?



# Karakia whakamutunga (closing)

Kia hora te marino

Kia whakapapa pounamu te moana

Kia tere te kārohirohi i mua i tōu huarahi

Haumi ē, hui ē, tāiki ē!





Awamutu Stream (photo:Diana Isaac)

## He Rautaki Wai Āwhātanga | Stormwater Management Strategy (SMS)

# Thank You!

## Feedback on draft –end of Feb



Korokoro Stream mouth (photo:Stu Farrant)