





Stage 1 - (approximately \$16.9M)

Package 1

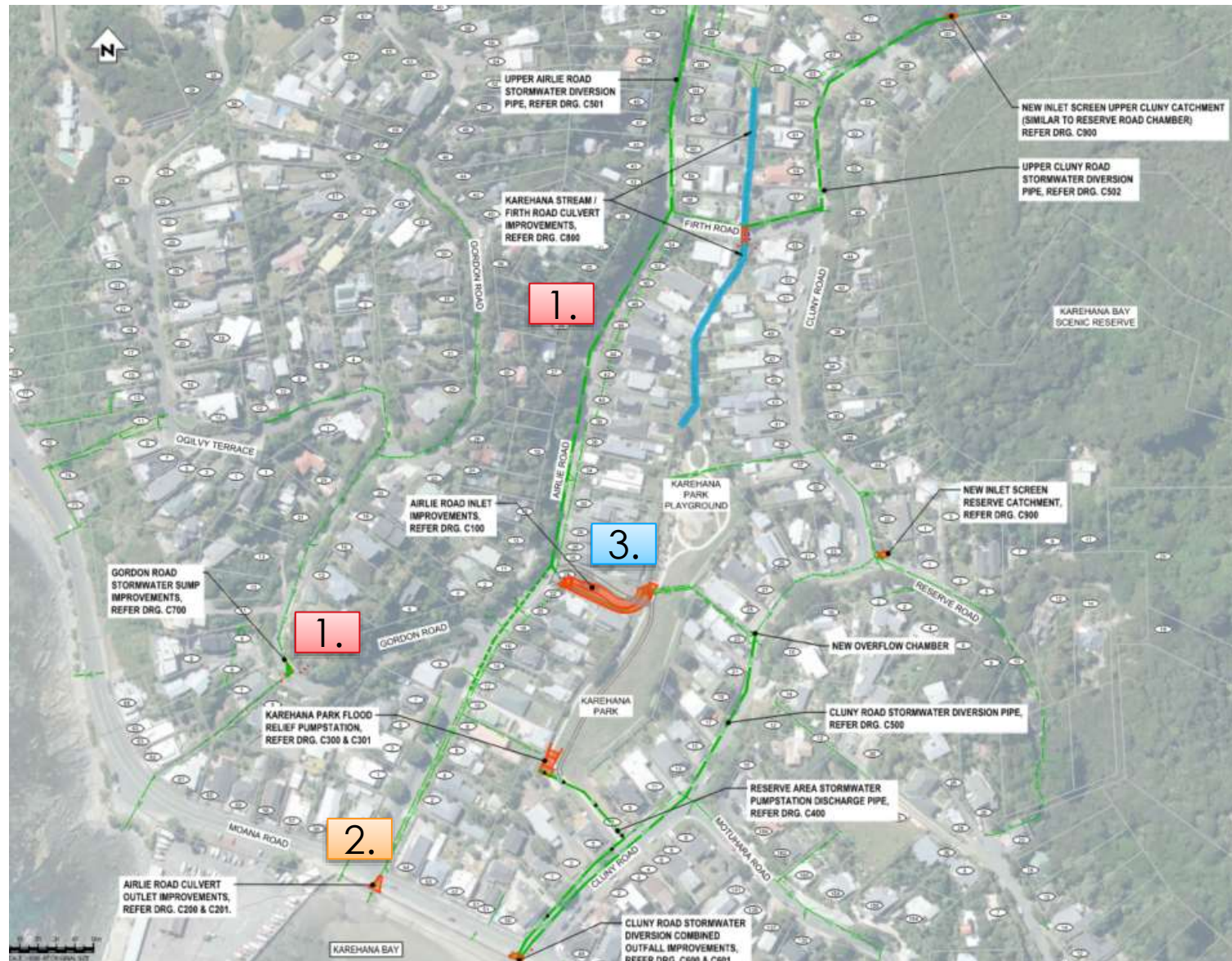
-  Upper Airlie Road Diversion
-  Gordon Road Sump Improvements

Package 2

-  Airlie Road Outlet Improvements

Package 3

-  Airlie Road Inlet Improvements



Karehana Stormwater Improvement



Stage 2: Balance of Scope – (approximately ±\$25M)

Package 1

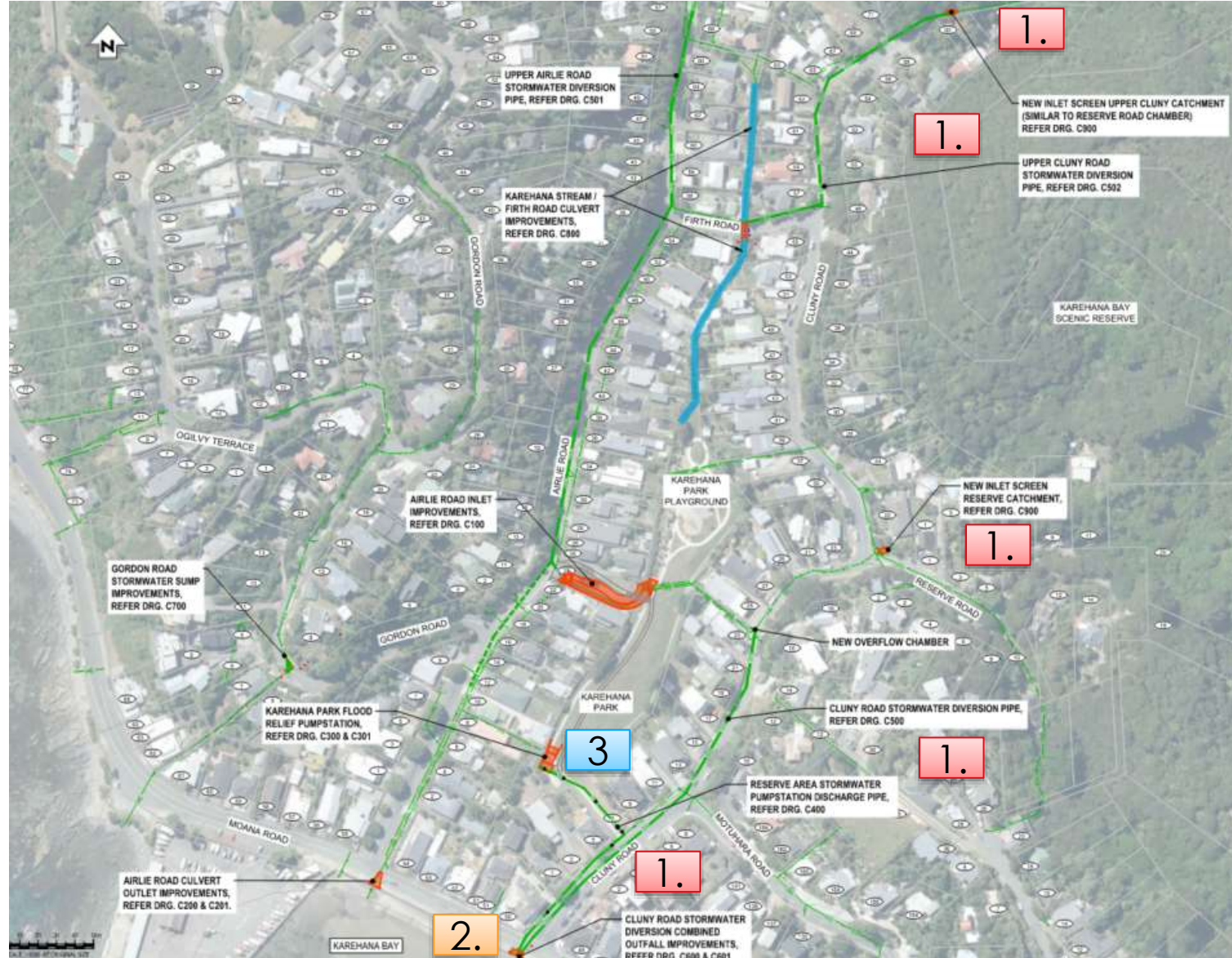
- Upper Cluny Road Diversion
- Cluny Road Diversion
- New Reserve Road Inlet Screen
- New Upper Cluny Road Inlet Screen

Package 2

- Cluny Road Diversion

Package 3

- Karehana Park Flood Relief Pump Station and Rising Main



Karehana Stormwater Improvement