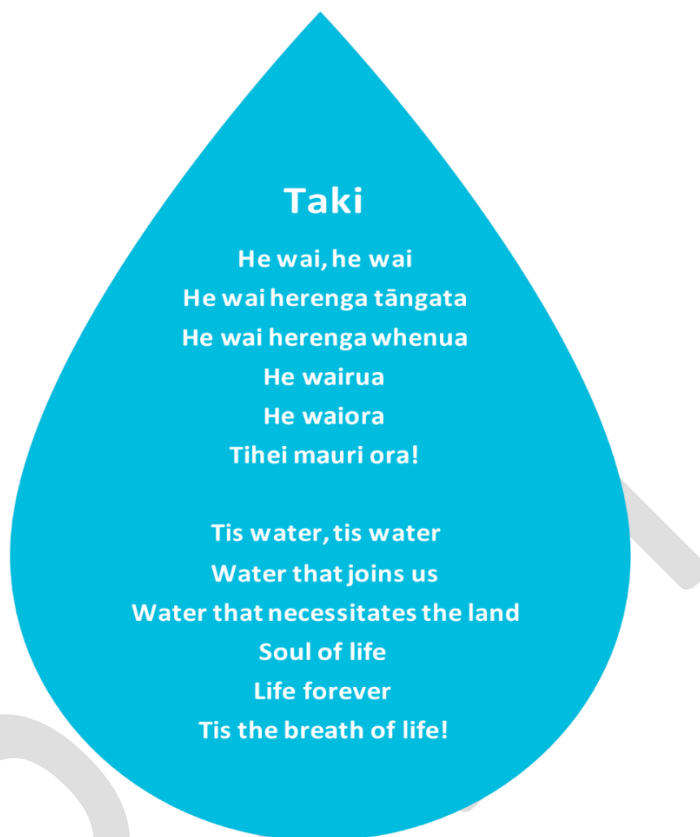


Featherston WWTP Consent

MONTHLY REPORT

30 September 2022





Te Horopaki Background

The Featherston WWTP has been operating under a historic resource consent since 2012, when the existing consent expired. Subsequently SWDC lodged a new consent application to continue to discharge treated wastewater into Donalds Creek. GWRC had concerns about the discharge, and that application is currently on hold.

In 2017, SWDC lodged a new consent application to transition to a land-based discharge. This application was subsequently withdrawn in 2019 and SWDC moved to work with Wellington Water.

In 2020, SWDC commissioned Wellington Water to work towards achieving a new resource consent for the WWTP. Since then, we have been working through a process with key stakeholders, mana whenua and the South Wairarapa community in 2020 to source ideas, define objectives and criteria and develop options.

Ngā hoaketanga

Project Objectives

1. To obtain consent approval for upgrading the Featherston wastewater treatment plant (WWTP) to improve effects on the existing receiving environment, and
2. To determine the suitability of a transition to a land-based wastewater disposal system in the future.

He Whakarāpopoto

Project Summary

Reporting period 1 to 30 September 2022

The community drop-in session was held on September 15 with 30-40 people attending throughout the afternoon. Engagement with GWRC and ngā iwi is ongoing. Environmental monitoring continued as planned. The first draft of the basis of design report was shared to Wellington Water for review.

Hauora o te Taiao

Health, safety, environment & quality

General H&S Status

No issues. A Health and Safety Plan has been prepared for the upcoming environmental investigations.

General Environmental Status

The treatment plant is continuing to discharge as permitted.

General Quality

The consenting strategy has been finalised. The first draft of the basis of design report has been issued to Wellington Water for review.

Ngā Kaupapa mahi o Mahuru

August project activity

Communications

There was a community drop-in session on 15 September. 30-40 people attended and engaged with the project team in attendance. A summary of this event is appended to this report.

Consent

A pre-application meeting with some of GWRC's technical experts was held on 14 September. A further technical meeting is booked for early October.

There was discussion about lodging a further extension request to allow time for the new consent application to be processed and a decision made, this will be lodged by the end of October 2022.

Design

The MBBR trial report was issued to the project team and the draft basis of design report was issued to Wellington Water for review.

Environmental

Receiving Environment Monitoring Plan (REMP) completed. Environment monitoring on-going as planned. Soil investigations confirmed ground water at depth of ~1.7m on 15-16 September.

Hei tērā marama

Next month

Communications

- Maintain FAQs on website to reflect engagement, and
- Plan for next community engagement to be held in November 2022

Consent

- On-going meetings with GWRC and their technical experts, and
- Submit further section 37 extension of time request by 31 October 2022.

Design

- Update basis of design report following Wellington Water review,
- Work with iwi on co-design planning, and
- Progress updated cost estimate and design drawings.

Environmental Investigations

- Regular fortnightly surface water sampling,
- Complete first round of ecological surveys,
- Install additional flow meter, and
- Undertake next soil sampling.

Raupapa Kaiwhaipānga Stakeholder Management



| Stakeholder | Relationship | Issues |
|-------------------------------------|--------------------------------------------------------------------------------------------------------------------------------------------------------------------------------------------------|---------------------------------------------------------------|
| GWRC Environmental Regulation | Ongoing meetings to collaborate on the preferred options. This month: pre-application meeting with technical experts and further meeting to discuss section 37 extension of time | Extension of time application to be made by end October 2022. |
| Māori Standing Committee | This month: Monthly governance meeting attendance | |
| Tangata Whenua | Open working relationship This month: Rangitane confirmed they will complete a Cultural Impact Assessment. Ngati Kahungunu confirmed interest in co-design of wetland and land treatment. | |
| SWDC Councillors | This month: no update this month due to elections | |
| SWDC officers | Monthly Governance Group meetings and bi-weekly Project Steering Group meetings. | |
| Featherston Community Board | This month: no update this month due to elections | |
| Regional Public Health | No updates this month | |
| Fish and Game | No updates this month | |
| Department of Conservation | No updates this month | |
| Adjacent landowners | This month: several attended community drop in. Offer made to meet with neighbouring landowners | |

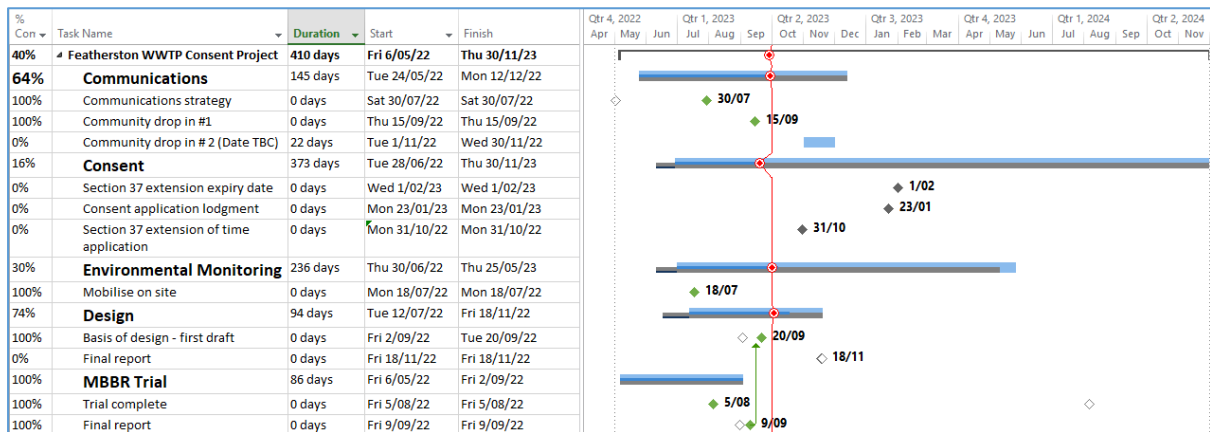
Te Hōtaka Wā Programme timeline



We remain slightly behind programme, but have recovered some of last months delays.

This month the MBBR trial report was delivered, the draft basis of design was issued for review and the first community drop in session was held.

We are forecasting to meet the deadline for consent application at the end of January 2023.



Ngā Mahi Matua Key critical path activities

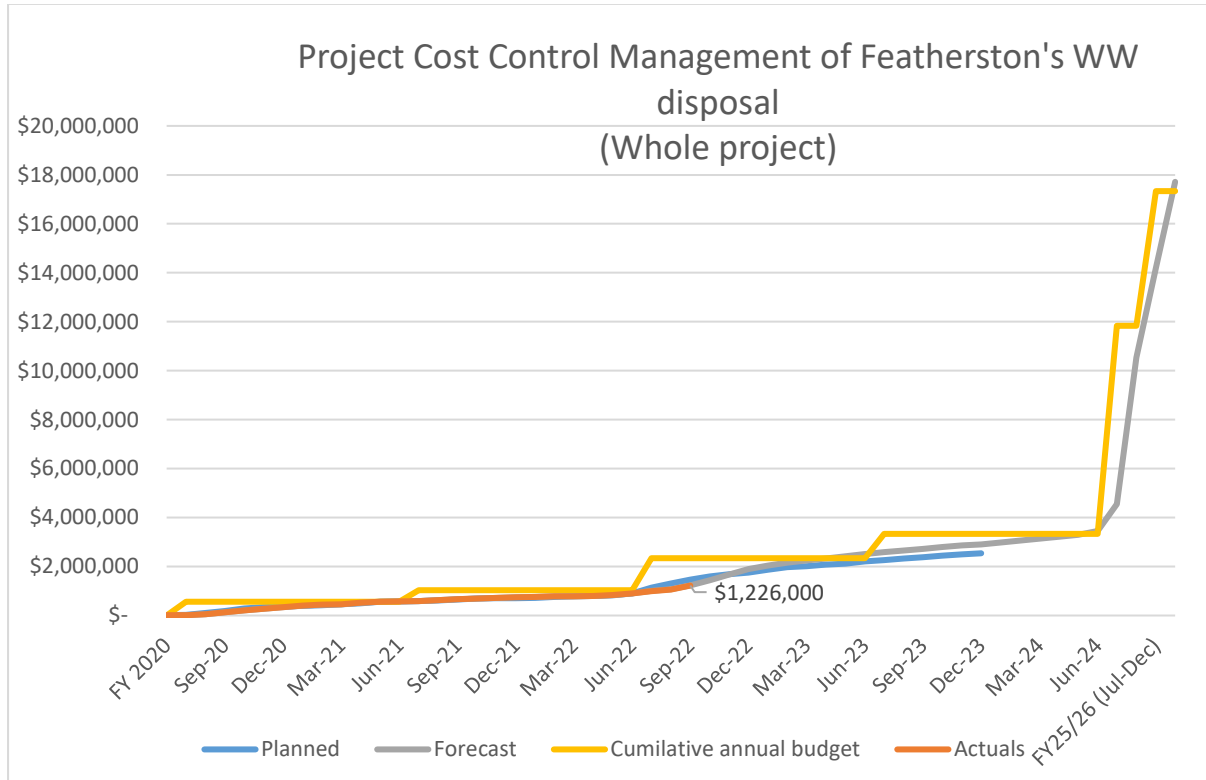
| Key Activity Status | Due Date | Progress | Expected/Actual Completion |
|------------------------------|------------|--------------------------------------------|----------------------------|
| Communications Strategy | 30/7/22 | Complete | 29/8/22 |
| Community drop in #1 | 14/9/22 | Complete | 15/9/22 |
| MBBR trial report | 15/7/22 | Complete | 21/9/22 |
| Draft Basis of design report | 2/9/22 | Complete | 30/9/22 |
| Draft AEE report complete | 14/11/22 | Work has commenced on this report. | 14/11/22 |
| Community drop in #2 | 30/11/22 | Planning underway, date tbc | 30/11/22 |
| Final AEE | 21/1/23 | | 21/1/23 |
| Lodge short term consent | 23/01/2023 | This is the hard deadline on the schedule. | 23/01/2023 |

Whakapaunga utu Project Expenditure



The 2022/23 budget is \$1.3m.

The budget is tracking behind forecast mainly due to the wet weather causing delays in mobilising site investigations. Work is progressing and it is expected that this will be corrected in the next couple of months.



Pūtea āpiti Contingency

There is a \$300,000 contingency for this phase of work.

This month additional costs have been identified for Rangitane o Wairarapa Cultural Impact Assessment and investigations for the existing pond liner.

The remaining contingency is approximately \$177,000

He Panonitanga

Scope change



No additional scope was approved this month.

Additional investigations for the existing oxidization ponds are being scoped up – an estimate for this work has been included in the contingency forecast section above.

He Whakahaere Raru

Risk Management



Current top 5 risks

| Risk Description & Consequence | Initial Rating | Mitigation | Rating |
|--------------------------------------------------------------------------------------------------------------------------------------------------------------------------------------------------------------------------------------------------------------------------|----------------|-----------------------------------------------------------------------------------------------------------------------------------------------------------------------------------------------------------------|--------|
| <p>Risk of missing the Section 37 deadline of Feb 23</p> <p>There is a short amount of time to prepare the consent application and consult with key stakeholders before submission. This is cause by not obtaining endorsement to proceed with the project.</p> | High | Follow PMP, lodge new consent application in January 2023 and lodge extension of time request in October 2022. | Medium |
| <p>There is a risk that the existing oxidation pond liners are leaking, this could create additional scope for upgrades which would increase time and cost for the project</p> | High | Additional investigations are being scoped to establish if this is an issue. | High |
| <p>There is a risk that the budget limitations / affordability are not sufficient to deliver a consentable solution (high I&I adds to this risk).</p> | High | Clear limitations in place, improvements prioritised to meet financial constraint | High |
| <p>There is a risk that if partners or stakeholders have a significant objection to the project or specific detail of the project, then additional work may be required to understand and resolve these issues or alternatively resulting in a shorter-term consent.</p> | High | <p>Regular meetings with key stakeholders via the Project Governance.</p> <p>Community drop in session held in September.</p> <p>Confirmation that both iwi groups will prepare cultural impact assessments</p> | Medium |
| <p>Regulatory / RMA changes</p> | High | <p>Legal and planning teams staying up to date with future changes.</p> <p>Consent strategy being developed with future RMA changes considered.</p> | Medium |

Ngā Take Issues



| ID # | Escalation Issue | Action | Action party | Date Required | Ranking (Low, Med, High) | Status |
|------|------------------|--------------------------------------------------------------------------------------------------|--------------|---------------|--------------------------|--------|
| 3 | High I&I | Analyse impact of high I&I readings to our ability to meet conditions for discretionary activity | GHD | August | High | Open |

Ngā Whakatūpato Early Warnings

- Delays to programme
 - The wet weather has delayed mobilising the environmental investigations. This means that there will be less data available for the consent submission. There is a risk that if sufficient data is not collected prior to January lodgement date, the lodgement could be delayed.
- I&I impact to design feasibility
 - The I&I issue will potentially impact the feasibility of a short-term or long-term plant upgrade. We are working with the wider Wellington Water team to understand the issue and possible mitigations or solutions for the consent.
- Materials and Labour shortages and costs
 - There is a national shortage of people and materials estimated to be up to 30% in the construction sector. As we move into construction phase we are expecting the costs estimates to increase.

Appendix A – Community Engagement summary

On 15 September 2022, South Wairarapa District Council and Wellington Water hosted a community drop-in session for the Featherston community to discuss the proposed upgrades to the Featherston Wastewater Treatment Plant as part of the Communications Plan implementation for the project.

Attendees

The following representatives attended from the project team:

- Ian Ho (GHD Technical)
- Helen Anderson (GHD Planning)
- Emily Greenberg (WWL)
- Linda Fairbrother (WWL Major Projects)
- John Donnachie (WWL Comms)
- Robyn Wells (SWDC) – will be there for part
- Dan Ormond (GHD/Latitude Comms)

Community Attendees

- 30-40 people

Key Discussion Themes and Observations

- **Land irrigation** – Several adjacent landowners came. When the design team (led by Ian Ho) talked about no pivot or spray irrigation and instead dripline or subsurface, there was audible relief and general support.
- **Wetland** – There was general support of the use of the wetland, especially when the option of a raised wetland was discussed.
- **Water table** – There was a lot of discussion about the water table and suitability for irrigation (including from the former owner) so agreement that the trial approach is best and the area broadly defined in the infographic was the best.
- **Drinkability** – Some residents said that regardless of cost, the only options that should be considered are those that achieve a drinking water standard.
- **Wider network** – There was wide acknowledgement/recognition that for any approach to work, the infiltration needs to be addressed to reduce flows. There were many theories on the best approach and why the problem exists.
- **Affordability** – There was general recognition that the scale of the proposal needed to be managed given the small rating base and wider network.
- **Three Waters Reform** – Robyn led the discussions on this, but there was some debate as to whether we should just wait and leave it to them. After discussion, most agreed that the do-nothing option was not an option given the impact on the environment and the current Greater Wellington Regional Council section 37 expiry
- **Ammonia** – There seemed to be good understanding of the need to address ammonia levels and the benefit of the approach to focus on it.