



Tracking well



In difficulty



At risk

**Water
Restriction Risk
Forecast**

14-day short-term risk

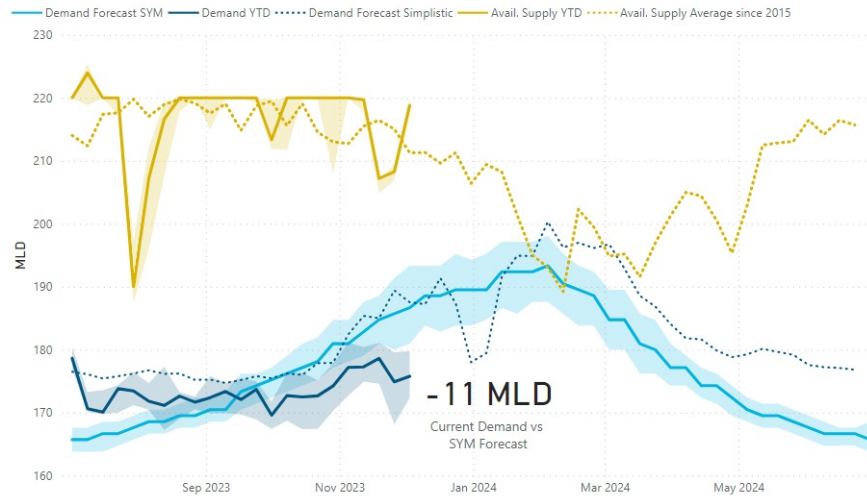
1

Projected Summer risk

3

Supply and Demand

Demand Tracker



Lines represent median, shaded areas represents 25th and 75th percentile. Updated as of 30th of November 2023.

Commentary

- Overall water usage is tracking below projected demand for this year.
- Available supply is above average for this time of year.
- An acute issue occurs when the black line crosses the yellow line.
- Acute issues may or may not occur given the variability of water usage and supply. The risk increases when the yellow line dips into the blue shading.
- The demand forecast, in blue, is now using the latest SYM model outputs. The previous simplistic demand forecast is shown as a dashed line.

How we are tracking

Workstream

Progress

Impact

Drought Management



Water Loss Management



Comms & Engagement



Response Management



High Level Risks

Metro average daily demand steady over the past fortnight at 173MLD. Supply headroom and lake storage is healthy. Accuracy issue with Te Marua outflow meter being investigated. SWDC supply sources healthy. Non-residential demand management recommendations draft report received.

Leak repair rates remain constrained by available Council budgets and open leaks are increasing. The reactive connection renewal program has increased productivity in the last fortnight to 32 connections and councils have assisted in reducing administration in relation to corridor access requests. The pressure management projects have made progress over the last fortnight and are on track to be commissioned prior to Christmas.

The communications campaign is tracking well. We have briefed in all councils on the risk. Next steps are to go back to the Water Committee on our response plan for the summer & to share this publicly. A one-pager has been developed & will be presented to the Water Committee on 11 Dec.

Augmentation of supply - formal notification to GWRC, Taumata Arowai, FENZ, WREMO, NEMA complete. Operational picture is complex & we continue to work at pace to understand it, where we can within time & operational constraints. Strategy to protect critical zones – progressing - Upper Hutt testing plan complete – testing started, aim to complete before end of Dec. 2023 – potential that the strategy may not be effective.